

PostgreSQL no Kubernetes

Yago Nobre

Engenheiro de Software no Nubank



- Api
- Scheduler
- Controller Manager
- Kube Proxy
- Kube DNS
- ETCD

How they fit together

command line
admin tool

kubectl



etcd

← stores all
the state!

API server

runs on every node
↓

kubelet

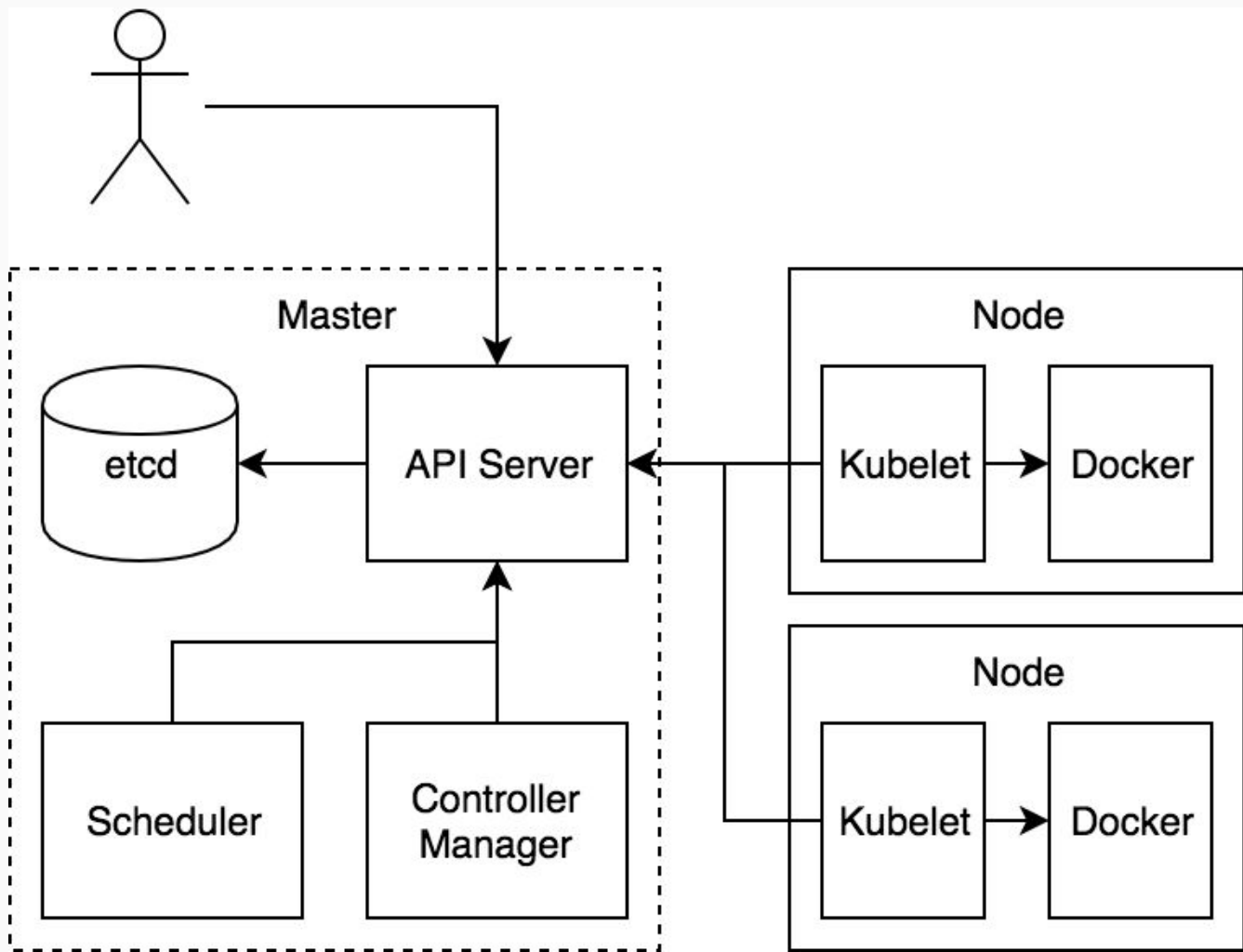
kube-dns

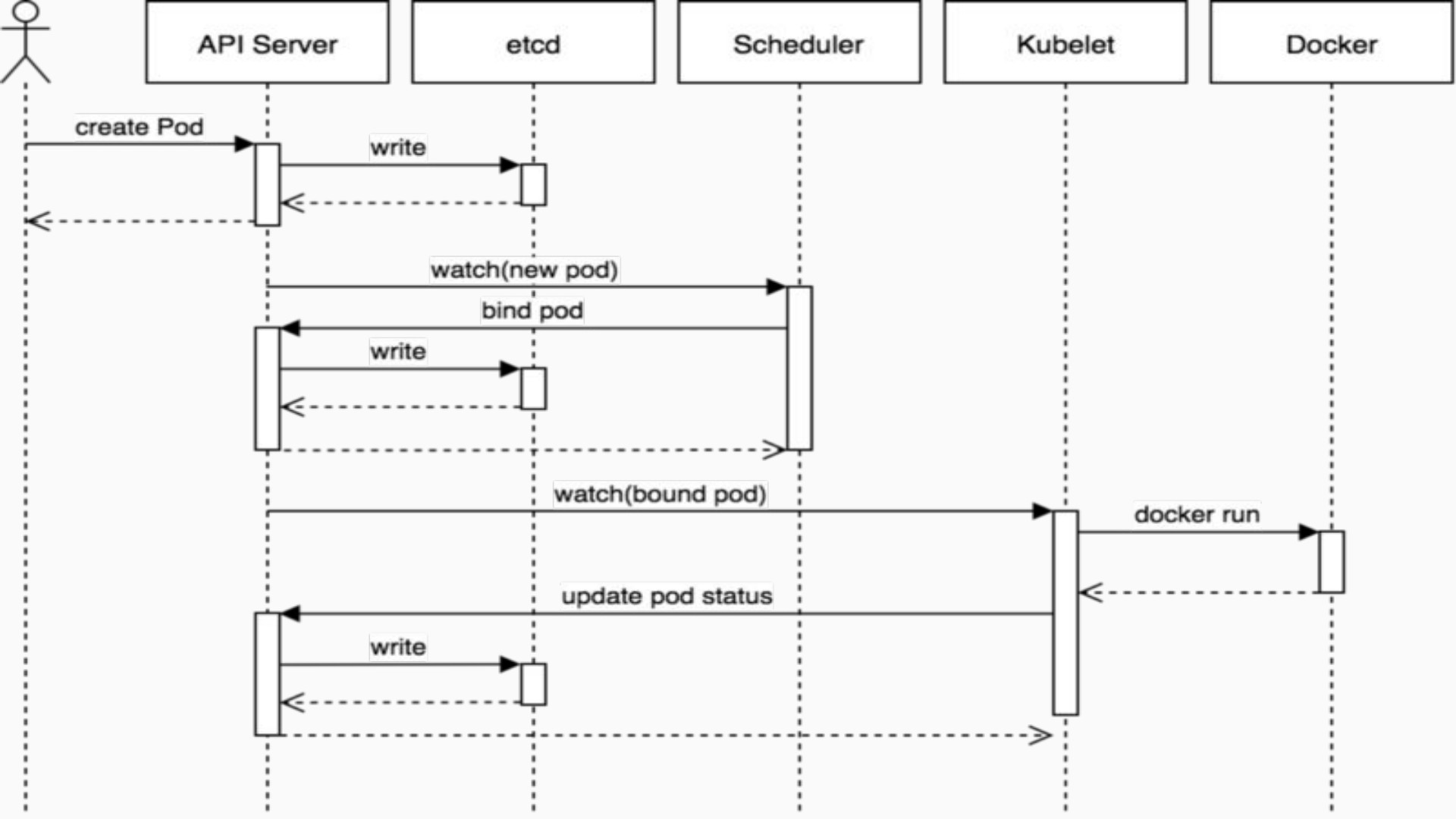
~~dashboard~~

controller
manager

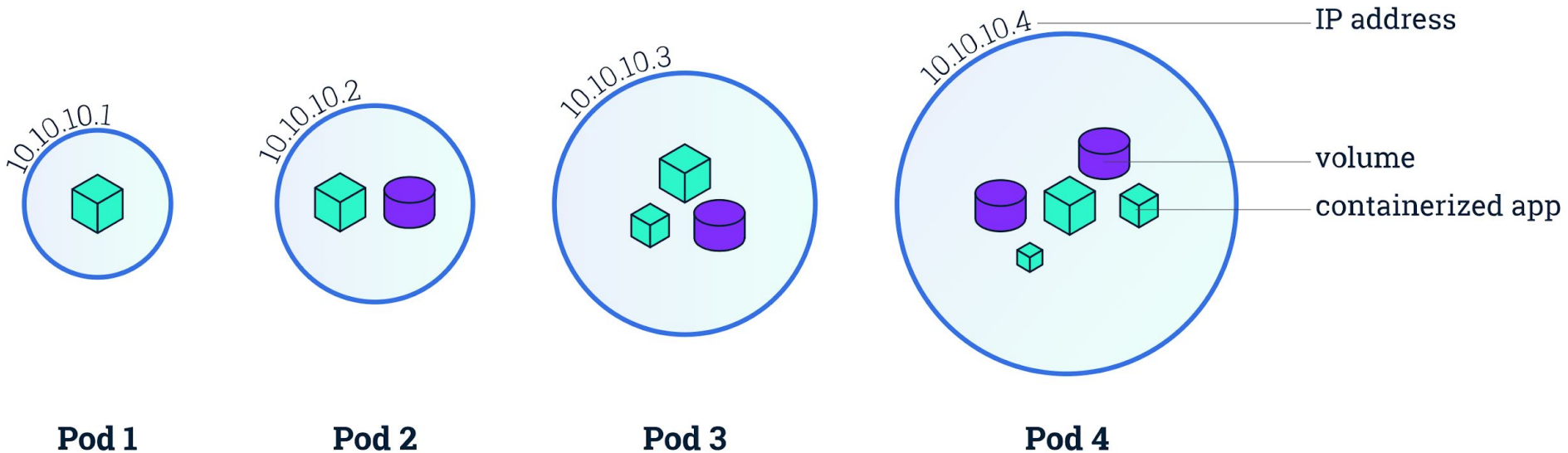
scheduler

kube-proxy

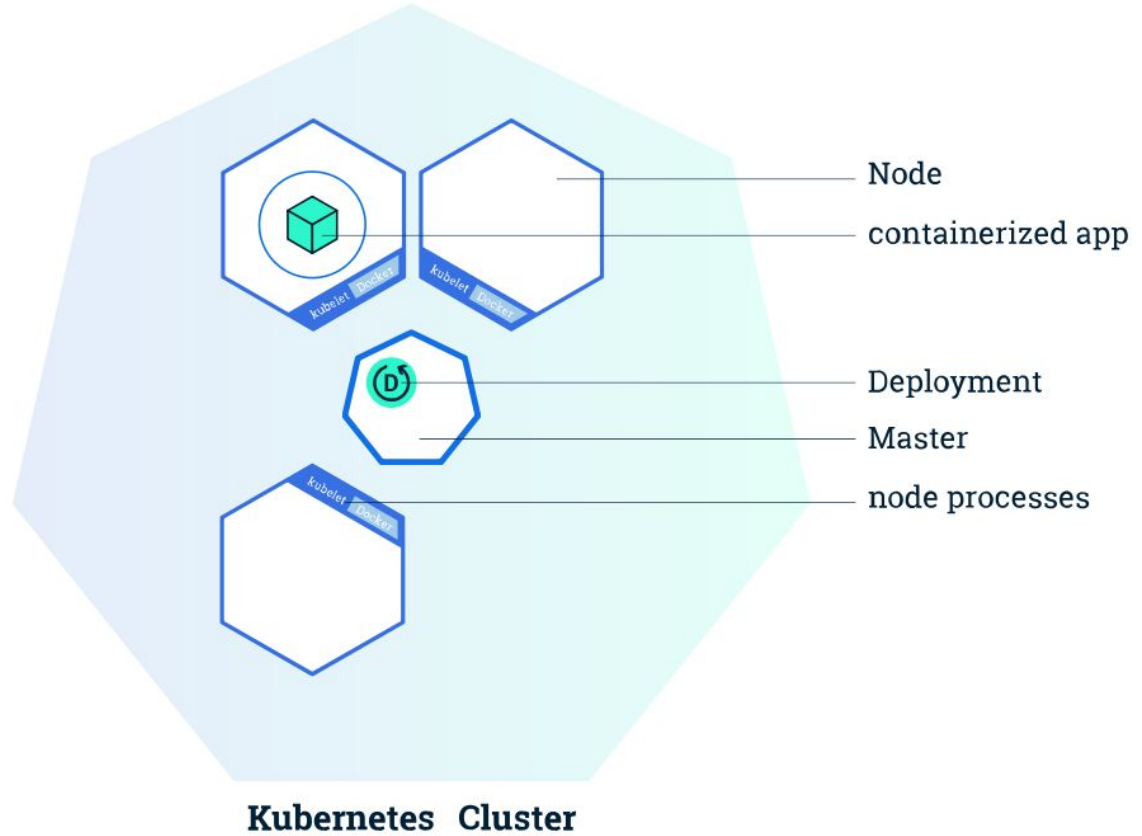




Pod

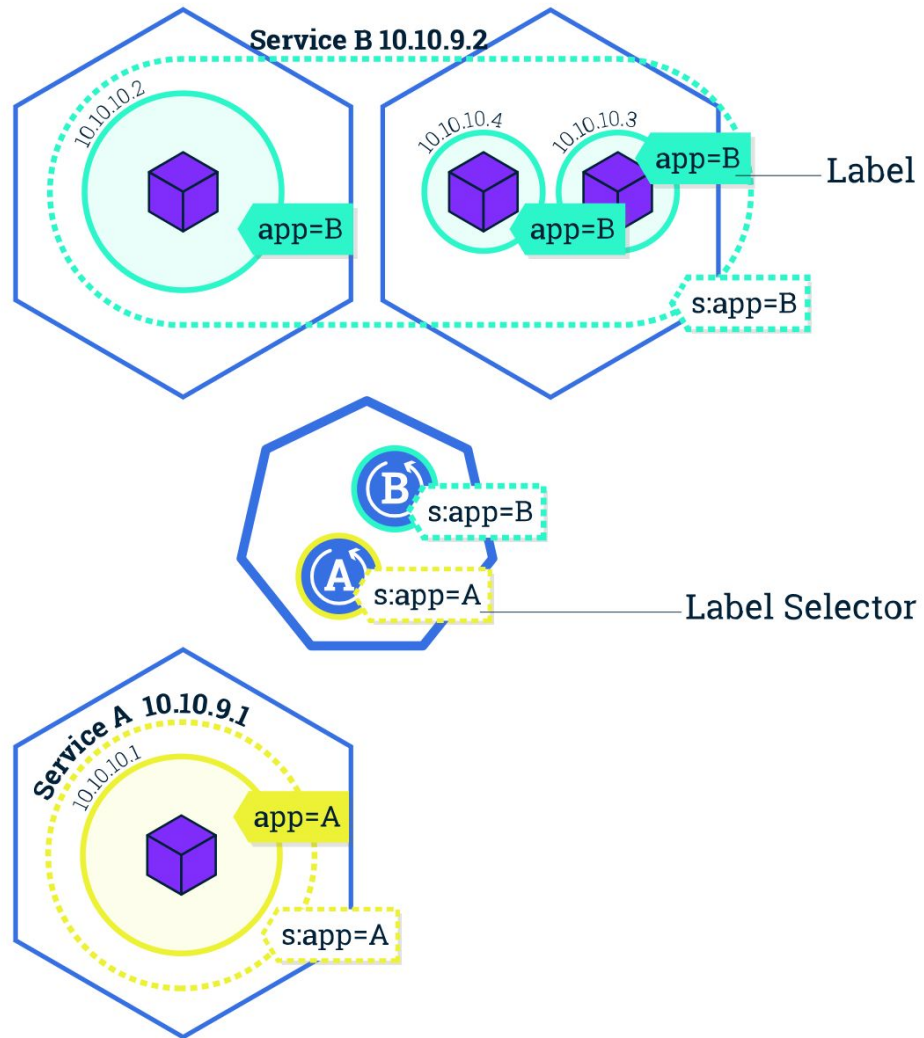


Deployment



Persistent Volumes

Service



Secret

Statefulset

Node Selector

Taint

Operator

Obrigado!
@yagoyns

