

# **Lessons Learned & Future Plans**

**Simon Riggs**  
**CTO, 2ndQuadrant**  
**PostgreSQL Major Developer & Committer**



# PITR

- Point In Time Recovery
- Critical Feature for Enterprise adoption
- Do Big Things!
- Extensibility is Good → BaRman

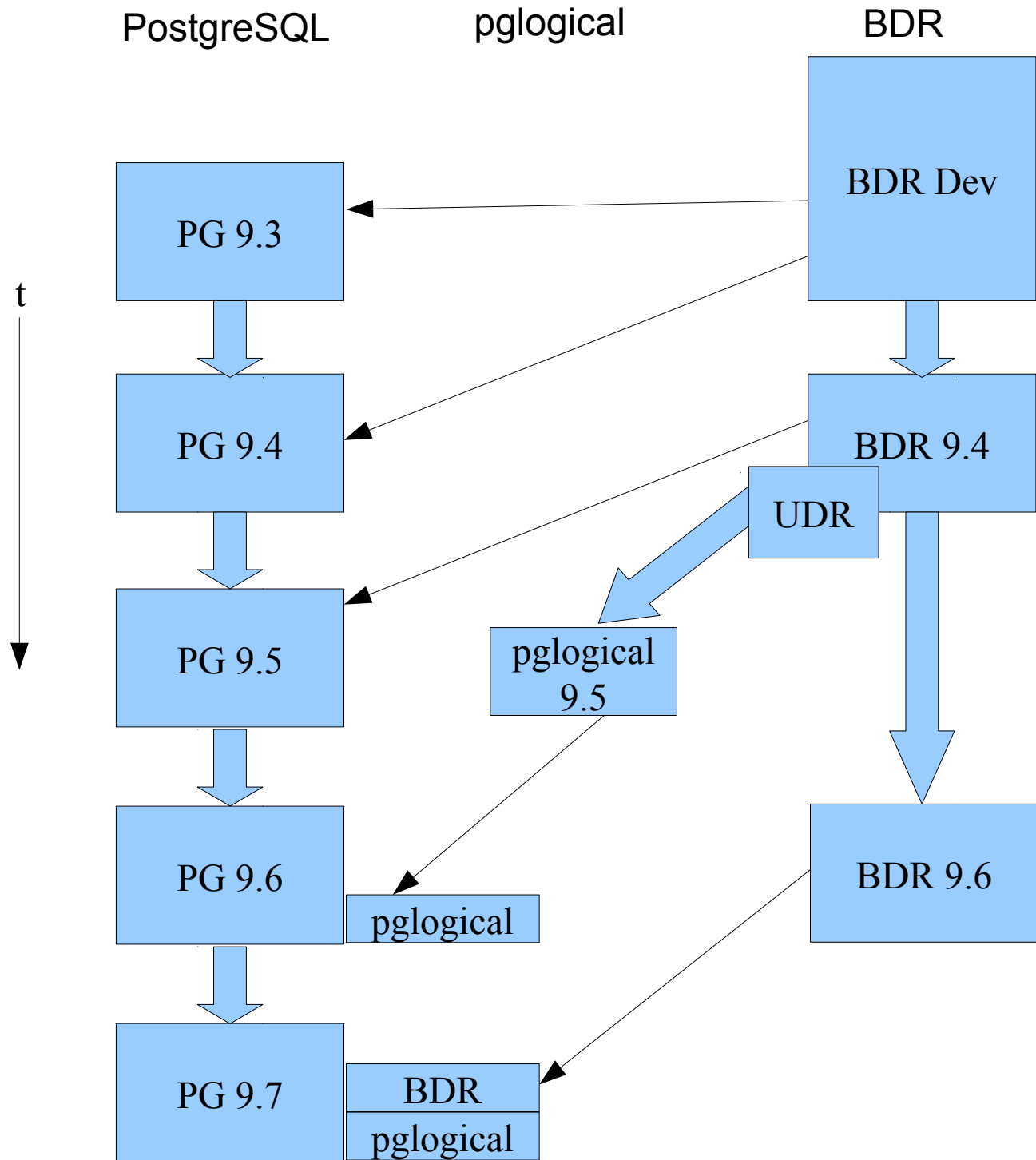
# Streaming Replication

- Streaming Replication
  - Simple Things work best
- Hot Standby
  - Sometimes, complexity is needed
  - Complexity takes much longer
  - Generates way more bugs
- Synchronous Replication



# Extensibility

- Extensions
- Background Workers
- Logical Decoding
- Sequence Access Method
- Sample Access Method

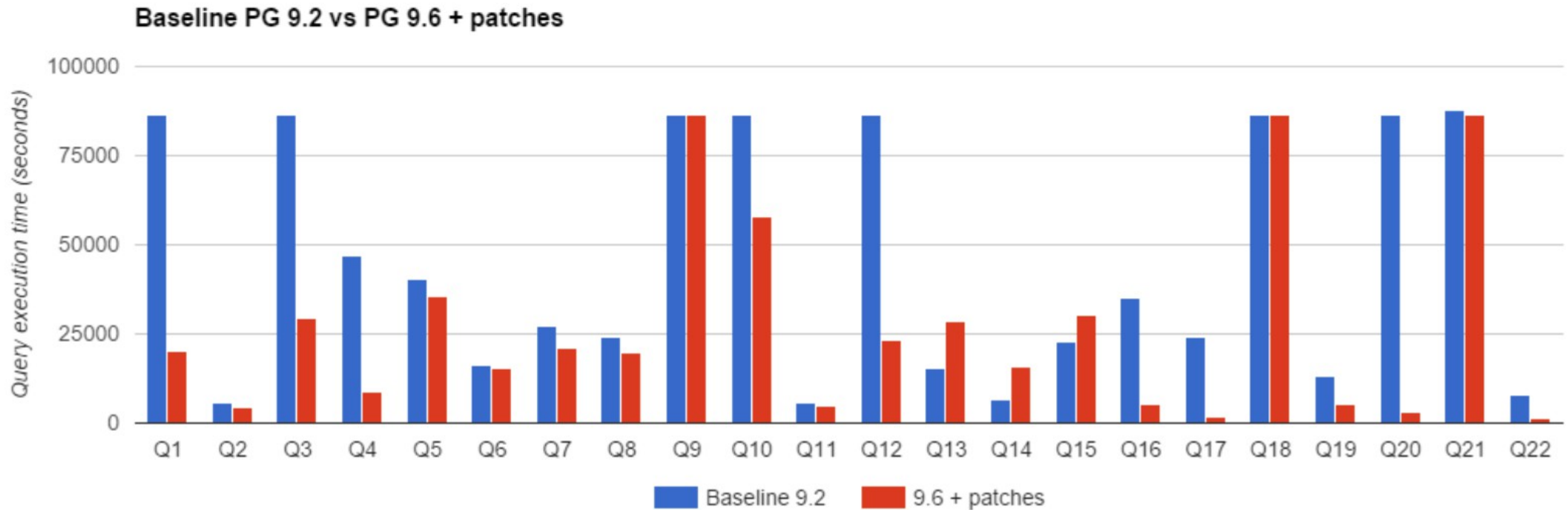




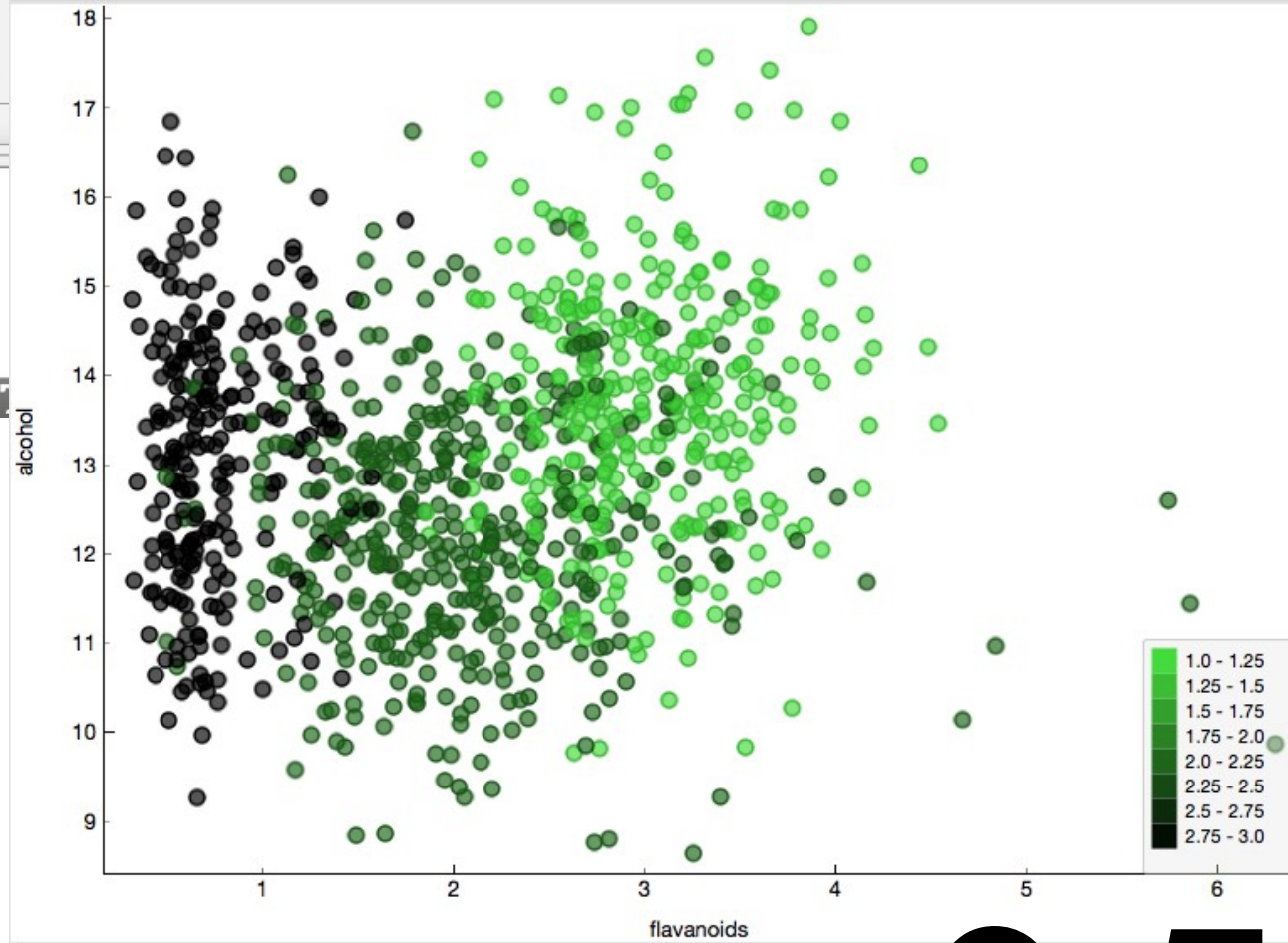
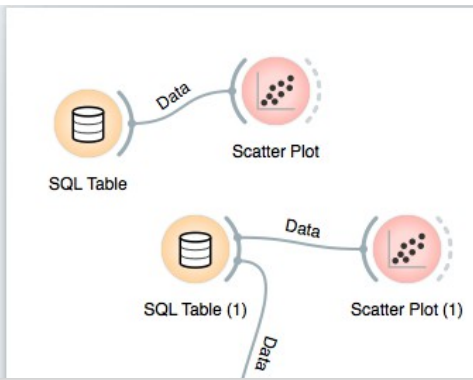
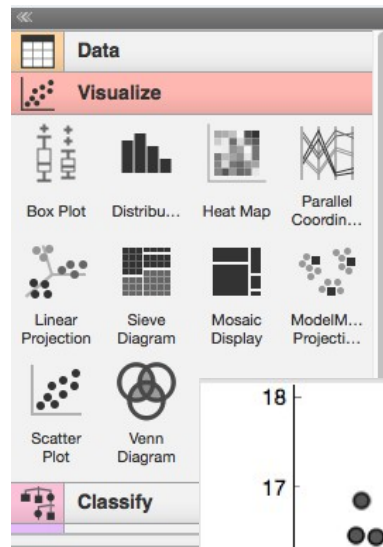
# AXLE Project from EU

- Block Range Indexes (BRIN)
- TABLESAMPLE
- Optimizer enhancements
  - Aggregate sharing
  - Aggregate pushdown
  - Multi-column statistics
- Attention to detail

# Recent TPC-H results, 3TB



- Unified Data Analytics
- PostgreSQL 9.5
  - TABLESAMPLE
- Orange
- LibreOffice Calc
- Access to all Big Data sources
  - Oracle
  - Hadoop



# 9.5



# TABLESAMPLE in 9.5

- SELECT avg(cost)  
FROM bigtable
  - Scans whole table to return precisely calculated answer
- SELECT avg(cost)  
FROM bigtable TABLESAMPLE system(1)
  - 1% sample of **table blocks** - fast, approximate answer
- SELECT avg(cost)  
FROM bigtable TABLESAMPLE system\_time(1)
  - 1 second sample – fast, approximate answer
  - **Time-bounded**

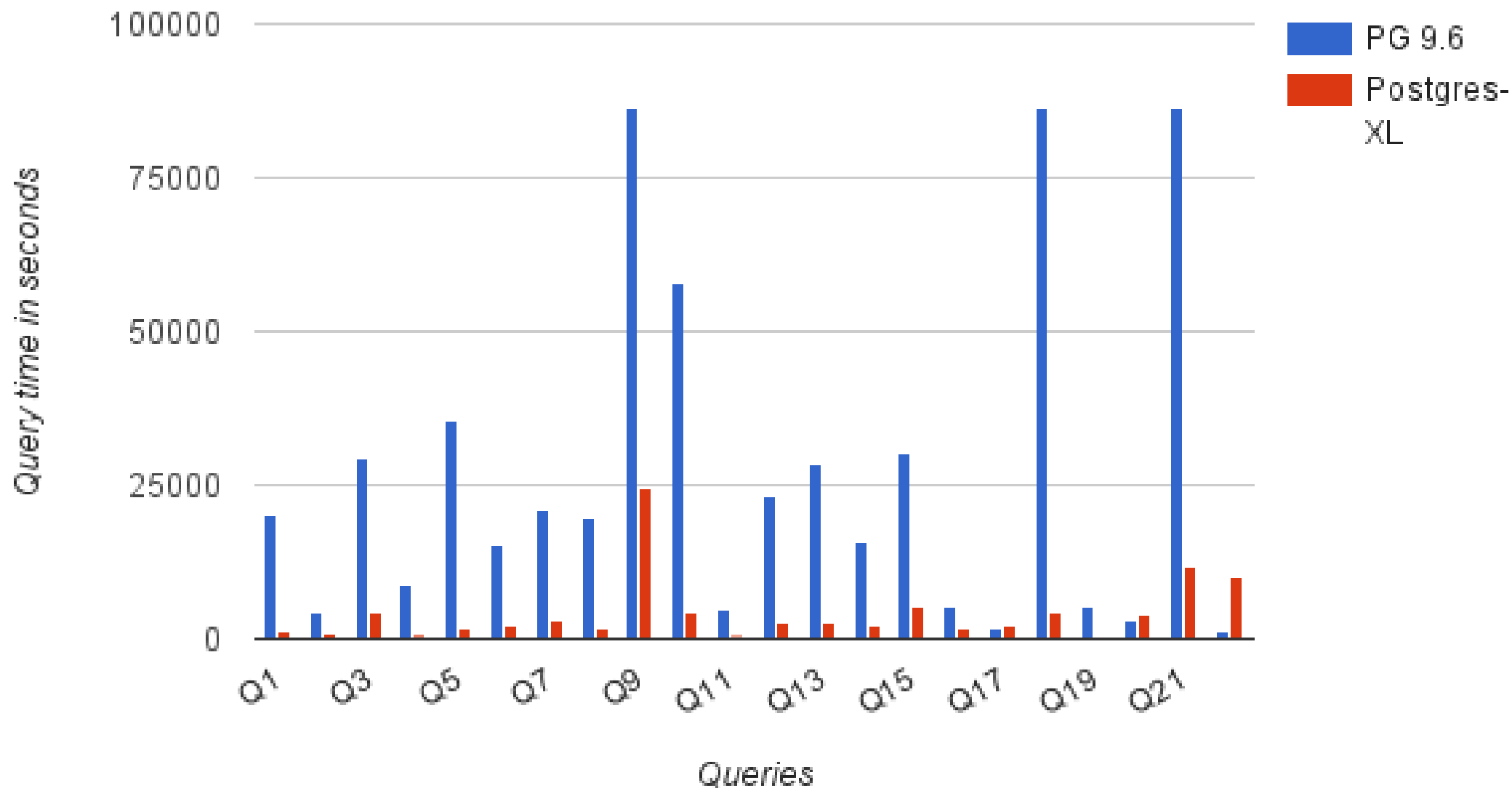
# 9.5



# Performance Analysis

- Use more resources → Parallel Query
- Increase efficiency → BRIN, Optimizer
- Operational Business Intelligence
  - OLTP
  - Business Intelligence
  - Machine Intelligence

### PG 9.6 and Postgres-XL - 3TB TPC-H





# Summary

- 9.5 out soon, 9.6 looking good also  
AXLE has been a huge benefit to PostgreSQL
- 2ndQuadrant commit to 4 man years per year for Core PostgreSQL development, rising over time
  - Logical Replication & High Availability
  - Scalable PostgreSQL
  - Operational Business Intelligence
  - Administration Improvements
  - Security
- **Customer funded, sustainable open source development**
- *Highly Available, Responsive Support & RemoteDBA*